

# LAPEYRE SAFETY STAIRS

For use with Material Platforms over Injection Units



Unique alternating tread design provides a greater tread depth permitting comfortable face-forward descents.

Cushioned center stringer all but eliminates the possibility of hitting the nosing of a tread.

Close-fitting handrails fit under the user's arms - provides better support than steep stairs or ladders.

Small items can easily be carried up or down the stairs



## Developed By a Molder for All Molders!

- Meets OSHA Code
- Safer than ship's or vertical ladders
- Over 26,000 in use worldwide
- Custom built to order (allow 2-3 weeks delivery)



Vertical Rise		Carbon Steel Yellow Powder Coat Finish	Carbon Steel Hot Dipped Galvanized	Aluminum Natural Finish 68 Degree	Vertical Rise		Carbon Steel Yellow Powder Coat Finish	Carbon Steel Hot Dipped Galvanized	Aluminum Natural Finish 68 Degree
Feet	Inches	56/68 Degree	56/85 Degree		Feet	Inches	56/68 Degree	56/85 Degree	
2	24	N/A	N/A	Inquire	9	108	Inquire	Inquire	Inquire
2-1/2	30	N/A	N/A	Inquire	9-1/2	114	Inquire	Inquire	Inquire
3	36	Inquire	Inquire	Inquire	10	120	Inquire	Inquire	Inquire
3-1/2	42	Inquire	Inquire	Inquire	10-1/2	126	Inquire	Inquire	Inquire
4	48	Inquire	Inquire	Inquire	11	132	Inquire	Inquire	Inquire
4-1/2	54	Inquire	Inquire	Inquire	11-1/2	138	Inquire	Inquire	Inquire
5	60	Inquire	Inquire	Inquire	12	144	Inquire	Inquire	Inquire
5-1/2	66	Inquire	Inquire	Inquire	12-1/2	150	Inquire	Inquire	Inquire
6	72	Inquire	Inquire	Inquire	13	156	Inquire	Inquire	Inquire
6-1/2	78	Inquire	Inquire	Inquire	13-1/2	162	Inquire	Inquire	Inquire
7	84	Inquire	Inquire	Inquire	14	168	Inquire	Inquire	Inquire
7-1/2	90	Inquire	Inquire	Inquire	14-1/2	174	Inquire	Inquire	Inquire
8	96	Inquire	Inquire	Inquire	15	180	Inquire	Inquire	Inquire
8-1/2	102	Inquire	Inquire	Inquire					

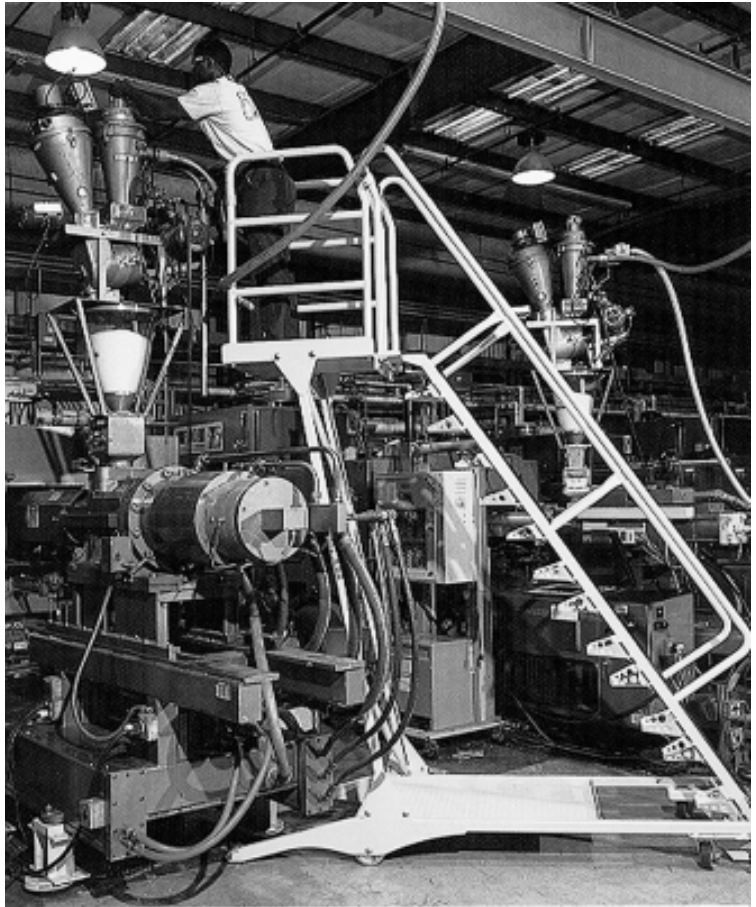
Inquire for stairs up to 20'

© 2011 MOLDERS CHOICE, Inc.



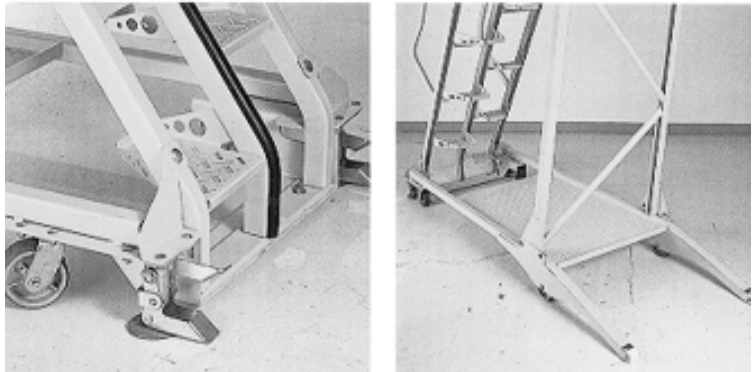
24 Hour Service - 7 Days a week  
**1-800-809-4623**  
 WebSite: [www.molderschoice.com](http://www.molderschoice.com) • Email: [molders@molderschoice.com](mailto:molders@molderschoice.com)

# LAPEYRE SAFETY MOBILE STAIR



Lapeyre® Mobile Stairs provide stability and safety that no other mobile stairs offer. Safety features include alternating tread design, close-fitting handrails and a cushioned center stringer.

The semi-cantilevered design, combined with a platform, allows the user to work safely and easily over heavy equipment and conveyors. An equipment platform at the base provides stability to the stairs and ample storage for tools. Moving the stair is made easy with polyurethane, 900 lb-load casters. Dependable, easy-to-use floor locks add to the stair's sturdiness.



**Materials &**

**Finishes:** Carbon Steel in Safety Yellow Powder Coat

**Heights:** 3', 4', 5', 6', 7' and 8'

**Angle:** 56 degrees

PART#	HEIGHT	PRICES	PART#	HEIGHT	PRICES
MSCS3	3'	Inquire	MSCS6	6'	Inquire
MSCS4	4'	Inquire	MSCS7	7'	Inquire
MSCS5	5'	Inquire	MSCS8	8'	Inquire

© 2011 MOLDERS CHOICE, Inc.



24 Hour Service - 7 Days a week

## 1-800-809-4623

WebSite: [www.molderschoice.com](http://www.molderschoice.com) • Email: [modlers@molderschoice.com](mailto:modlers@molderschoice.com)