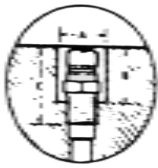


WATER LINE PLUGS

FLUSH MOUNTED



EXTERNALLY MOUNTED



Interchangeable with

- Jiffy-Tite
- Parker
- Foster
- Rectus (Obac)

MALE (brass)

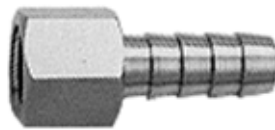
FEMALE (steel)

PART#	PRICE	NPT	Water pass	A	C			D
					B (all dimensions in inches)			
QC251	\$.37	1/8"	1/4"	11/16	11/16	1	5/8	
QC252	\$.44	1/4"	1/4"	27/32	131/6	1-13/16	7/8	
QC253	\$.60	3/8"	1/4"	1	15/16	1-1/4	27/32	
QC352	\$.52	1/4"	3/8"	1	1-3/32	1-7/17	1-1/32	
QC353	\$.60	3/8"	3/8"	1	1-1/8	1-3/16	1-1/16	
QC354	\$1.09	1/2"	3/8"	1-3/16	1-1/4	1-9/16	1-7/16	
QC554	\$1.44	1/2"	5/8"	1-1/4	1-1/2	1-13/16	1-7/16	
QC556	\$2.26	3/4"	5/8"	1-1/2	1-9/19	1-7/8	1-1/2	

PART #	PRICE	NPT	Water pass	All plugs for use with coupling#
QC251F	\$.69	1/8"	1/4"	All 200 series
QC252F	\$.69	1/4"	1/4"	All 200 series
QC253F	\$.66	3/8"	1/4"	All 200 series
QC352F	\$.90	1/4"	3/8"	All 300 series
QC353F	\$.66	3/8"	3/8"	All 300 series
QC354F	\$1.60	1/2"	3/8"	All 300 series
QC554F	\$1.94	1/2"	5/8"	All 500 series
QC556F	\$2.81	3/4"	5/8"	All 500 series

All the above plugs are designed short, so they may be recessed below the mold surface to avoid damage during mold change or storage.

BARB TYPE FITTINGS



STANDARD MALE (Require hose clamps)			
PART#	PRICE	NPT (in)	Hose (in)
BM1	\$1.66	1/8	1/4
BM2	\$1.48	1/8	3/8
BM3	\$1.68	1/4	1/4
BM4	\$1.68	1/4	3/8
BM5	\$1.87	1/4	1/2
BM6	\$1.95	3/8	1/4
BM7	\$1.95	3/8	3/8
BM8	\$2.20	3/8	1/2
BM9	\$2.33	1/2	3/8
BM10	\$2.40	1/2	1/2
BM11	\$2.36	1/2	3/8
BM12	\$3.09	1/2	3/4
BM13	\$4.50	1	1
BM14	\$3.45	3/4	3/4
BM15	\$3.24	3/4	1
BM16	\$6.55	1	3/4
BM17	\$4.50	3/4	1/2

STANDARD FEMALE (Require hose clamps)			
PART#	PRICE	NPT (in)	Hose (in)
BF1	\$ 1.70	1/4	1/4
BF2	\$ 1.70	1/4	3/8
BF3	\$ 2.03	3/8	3/8
BF4	\$ 2.08	3/8	1/2
BF5	\$ 2.39	1/2	1/2

HOSE SPLICE (push-on style)		
PART#	PRICE	NPT
PBS1	\$1.68	1/4
PBS2	\$1.72	3/8
PBS3	\$2.18	1/2

PUSH-ON STYLE			
PART#	PRICE	NPT (in)	Hose (in)
PBF1	\$1.92	1/4	1/4
PBF2	\$2.33	3/8	3/8
PBF3	\$2.99	1/2	1/2

SPARE VITON WASHERS	
PART#	PRICE
VW200	\$.80 ea.
VW300	\$1.12ea.
VW500	\$1.00 ea.

PUSH-ON STYLE (No clamps required)			
PART#	PRICE	NPT (in)	Hose (in)
PBM1	\$1.75	1/4	1/4
PBM2	\$1.75	1/4	3/8
PBM3	\$2.14	3/8	3/8
PBM4	\$2.36	1/2	3/8
PBM5	\$2.14	3/8	1/2
PBM6	\$2.15	1/4	1/2
PBM7	\$2.45	1/2	1/2
PBM8	\$3.40	1/2	3/4
PBM9	\$3.60	1/8	1/4
PBM10	\$3.50	1/2	3/4
PBM11	\$9.98	1	1

THREAD SEALANT TAPE

- Low cost
- Seals against water, oil, gas, air leakage

PART#	WxL	MILL	PRICE
TST520	1/2" x 520"	3.5	\$1.75 each



© 2014 MOLDERS CHOICE, Inc.



24 Hour Service - 7 Days a week

1-800-809-4623

WebSite: www.molderschoice.com E-mail: modlers@molderschoice.com

Brass PIPE EXTENSIONS

- Extension Plugs are compatible with all major mold connection systems
- One piece construction for fast assembly and positive removal
- End threads tapered for standard NPT pipe assembly

200 SERIES

1/4" nominal
water passage



PART #	Length	NPT	PRICE	PART #	Length	NPT	PRICE	PART #	Length	NPT	PRICE
QC250X2.5	2-1/2	1/16"	\$2.85	QC251X13	13	1/8"	\$7.67	QC253X2.5	2-1/2	3/8"	\$3.55
QC250X4	4	1/16"	\$3.41	QC252X2.5	2-1/2	1/4"	\$2.63	QC253X4	4	3/8"	\$4.00
QC251X2.5	2-1/2	1/8"	\$2.46	QC252X4	4	1/4"	\$2.98	QC253X5.5	5-1/2	3/8"	\$4.75
QC251X4	4	1/8"	\$2.78	QC252X5.5	5-1/2	1/4"	\$3.80	QC253X7	7	3/8"	\$5.70
QC251X5.5	5-1/2	1/8"	\$3.53	QC252X7	7	1/4"	\$4.55	QC253X8.5	8-1/2	3/8"	\$6.60
QC251X7	7	1/8"	\$3.90	QC252X8.5	8-1/2	1/4"	\$5.35	QC253X10	10	3/8"	\$7.45
QC251X8.5	8-1/2	1/8"	\$4.62	QC252X10	10	1/4"	\$5.95	QC253X11.5	11-1/2	3/8"	\$8.45
QC251X10	10	1/8"	\$5.95	QC252X11.5	11-1/2	1/4"	\$6.68	QC253X13	13	3/8"	\$9.50
QC251X11.5	11-1/2	1/8"	\$6.68	QC252X13	13	1/4"	\$7.67				

300 SERIES

3/8" nominal
water passage



PART #	Length	NPT	PRICE	PART #	Length	NPT	PRICE	PART #	Length	NPT	PRICE
QC350X2.5	2-1/2	1/16"	\$3.00	QC352X5.5	5-1/2	1/4"	\$3.72	QC353X11.5	11-1/2	3/8"	\$9.50
QC350X4	4	1/16"	\$3.60	QC352X7	7	1/4"	\$4.30	QC353X13	13	3/8"	\$10.50
QC351X2.5	2-1/2	1/8"	\$2.65	QC352X8.5	8-1/2	1/4"	\$5.10	QC354X2.5	2-1/2	1/2"	\$4.60
QC351X4	4	1/8"	\$3.05	QC352X10	10	1/4"	\$5.75	QC354X4	4	1/2"	\$6.50
QC351X5.5	5-1/2	1/8"	\$3.72	QC352X11.5	11-1/2	1/4"	\$6.50	QC354X5.5	5-1/2	1/2"	\$7.50
QC351X7	7	1/8"	\$4.30	QC352X13	13	1/4"	\$7.50	QC354X7	7	1/2"	\$8.50
QC351X8.5	8-1/2	1/8"	\$5.30	QC353X2.5	2-1/2	3/8"	\$3.44	QC354X8.5	8-1/2	1/2"	\$10.50
QC351X10	10	1/8"	\$5.90	QC353X4	4	3/8"	\$3.80	QC354X10	10	1/2"	\$10.54
QC351X11.5	11-1/2	1/8"	\$6.45	QC353X5.5	5-1/2	3/8"	\$4.38	QC354X11.5	11-1/2	1/2"	\$12.50
QC351X13	13	1/8"	\$7.50	QC353X7	7	3/8"	\$5.26	QC354X13	13	1/2"	\$13.80
QC352X2.5	2-1/2	1/4"	\$2.63	QC353X8.5	8-1/2	3/8"	\$6.10				
QC352X4	4	1/4"	\$2.98	QC353X10	10	3/8"	\$7.75				

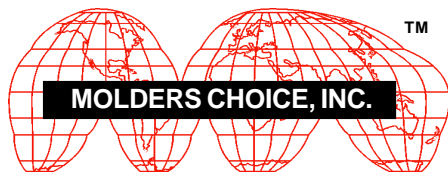
500 SERIES

1/2" nominal
water passage



PART #	Length	NPT	PRICE	PART #	Length	NPT	PRICE	PART #	Length	NPT	PRICE
QC553X2.5	2-1/2	3/8"	\$3.85	QC553X11.5	11-1/2	3/8"	\$9.71	QC554X8.5	8-1/2	1/2"	\$8.60
QC553X4	4	3/8"	\$4.35	QC553X13	13	3/8"	\$10.75	QC554X10	10	1/2"	\$10.20
QC553X5.5	5-1/2	3/8"	\$5.12	QC554X2.5	2-1/2	1/2"	\$4.40	QC554X11.5	11-1/2	1/2"	\$11.50
QC553X7	7	3/8"	\$5.62	QC554X4	4	1/2"	\$5.00	QC554X13	13	1/2"	\$13.00
QC553X8.5	8-1/2	3/8"	\$7.40	QC554X5.5	5-1/2	1/2"	\$6.50				
QC553X10	10	3/8"	\$8.55	QC554X7	7	1/2"	\$7.30				

©2014 MOLDERS CHOICE, Inc.



24 Hour Service - 7 Days a week

1-800-809-4623

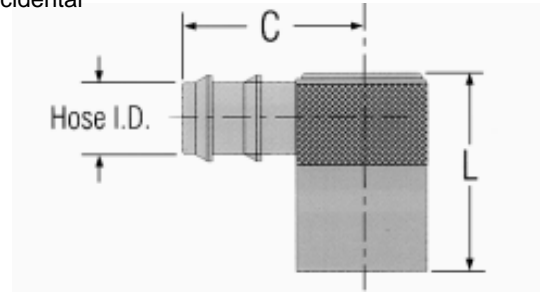
WebSite: www.molderschoice.com • Email: molders@molderschoice.com

QUICK COUPLER WATER JUMPERS

Maintains full flow rate of hose used.



Coupler sleeve twists to lock, preventing accidental disconnect.

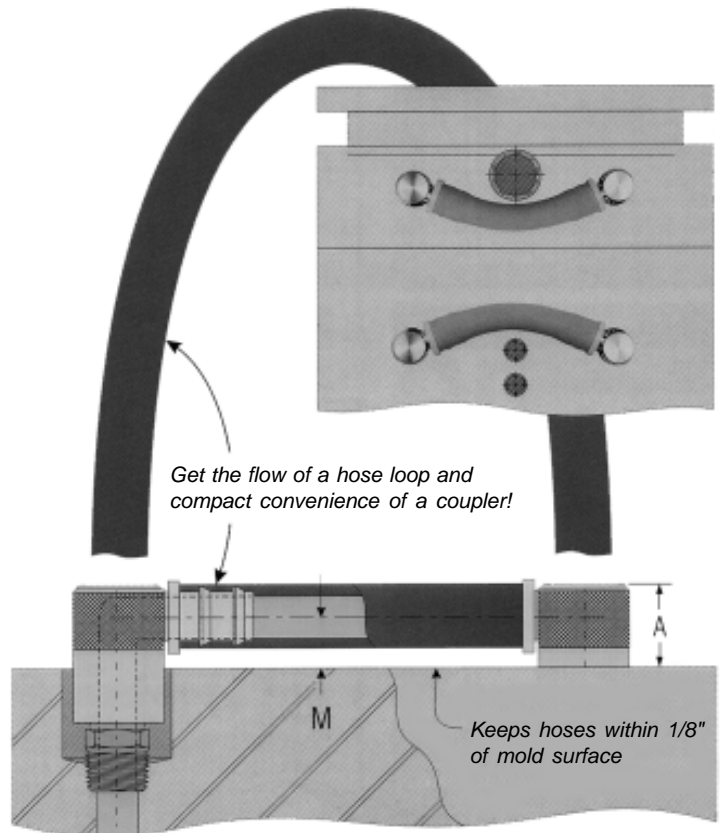


For use with Push-Lok hose, no hose clamps are required

PART #	Fits Plug Series	Hose I.D.	L	C	M	A	PRICE
WJ200-4	200	1/4"	1"	1-1/4"	3/8"	5/8"	\$6.30
WJ200-5	200	5/16"	1"	1-1/4"	3/8"	5/8"	\$6.30
WJ200-6	200	3/8"	1"	1-1/4"	3/8"	5/8"	\$6.30
WJ300-6	300	3/8"	1-7/16"	1-9/16"	1/2"	7/8"	\$7.40
WJ300-8	300	1/2"	1-7/16"	1-9/16"	1/2"	7/8"	\$7.40

Oversized and unrestricted flow path maintains **full flow rate** of hose used.

- Eliminates bulky hose loops.
- Compact design neatly and safely holds cooling lines close to the mold.
- Stocks only one part number for any hose size. No special tubes or length restriction systems.
- Compatible with all major mold connection systems.
- Unlimited installation options.
- Fits around obstacles, and installs in compact spaces.
- Viton Seals provide for temp to 400°F.
- All brass and stainless steel construction.



© 2009 MOLDERS CHOICE, Inc.



24 Hour Service - 7 Days a week
1-800-809-4623
 WebSite: www.molderschoice.com • Email: molders@molderschoice.com