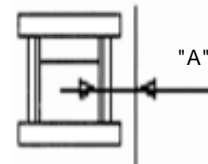


MOLD GUARD

Reduces Scrap, Improves Quality, Enhances Plant Appearance

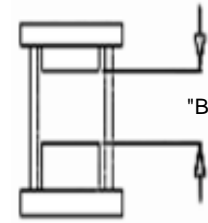
Another Parts Containment Solution from the Solution People!

- Heavy duty solid polycarbonate
- Utilizes Polypropylene Living Hinges
- Powerful Magnets for Quick & Secure mountings



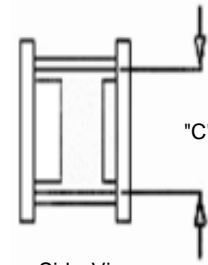
"A" Dimension "A" is the required clearance from the edge of the mold to the machine guard.

Top View
Mold Closed



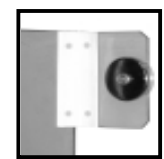
"B" Dimension "B" in the max mold open Dimensions measured between mold faces.

Top View
Mold Open



"C" Dimension "C" is the required clearance between the tie bars

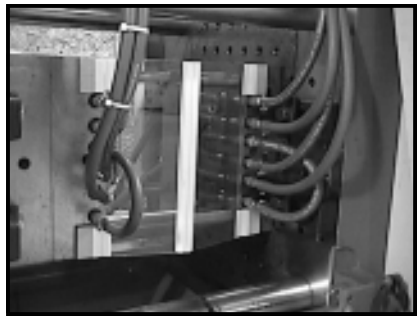
Side View
Mold Open



Magnetic Mounting



Mold Closed



Mold Open

PART #	Dim "A"	Dim "B"	Dim "C"	PRICES
MPB1-10	5-1/2"	9"	10"	\$159.00
MPB1-12	5-1/2"	9"	12"	\$159.00
MPB2-14	6-1/2"	12"	14"	\$179.00
MPB3-18	8-1/2"	16"	18"	\$205.00
MPB4-20	9-1/2"	18"	20"	\$215.00

All Mold Guard are sold in pairs

Since every mold is unique, CUSTOM Sizes made to Order,

Please call or fax dimensions.

© 2017 MOLDERS CHOICE, Inc.



24 Hour Service - 7 Days a week

1-800-809-4623

WebSite: www.molderschoice.com • Email: modlers@molderschoice.com