

StepGuard™

Protect your Molding Machine Investment & Your Plant Personnel



SPECIFICATIONS

1" x 1" Square Tubing
6" C-channel construction
Painted OSHA Yellow

Eliminates Inadvertent Valve Damage

- Safely Service and Load Hopper
- Stop your people from climbing on machine
- Prevents damaging expensive machine components
- Easy service to Injection Unit
- Protects entire manifold & valves
- Easy installation
- Detaches from machine fast, using quick release pins

*Custom designed for your specific injection machine
or we may already have your specs!
(Allow 2 - 3 weeks for manufacturing)*

MODEL		PRICE
SG	StepGuard	INQUIRE

*Quantity discounts available - Inquire

**To Order: Call and request a Special order form, complete the form with
Size of Machine along with Model # and Serial #, and Fax back to us.
We will call you back promptly with Pricing & Delivery**

Requires drilling and anchoring to machine base.

MATERIAL HANDLING STANDS

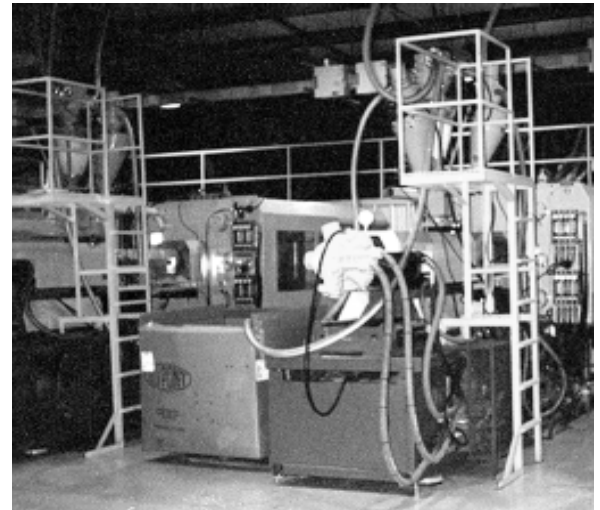
Create a much safer plant environment

- Enable Safe Hopper loading
- Let you Service Material Loaders & Dryers easily
- Eliminate using unsafe, flimsy ladders
- Stop your people from climbing on machine
- Prevent damaging expensive machine components
- Clean-up plant layout

*Custom Designed for your Specific Injection Machine
(Allow 3-4 weeks for manufacturing)*

PART #	PRESS SIZE RANGE	PRICE
MHS1	50 to 150 TON	INQUIRE
MHS2	160 to 300 TON	INQUIRE
MHS3	310 to 500 TON	INQUIRE
MHS4	OVER 500 TON	INQUIRE

To Order: Call for Order form, then complete form and fax back for Quote.
Quickly Bolts together.
Does require drilling machine base & plant floor.



SPECIFICATIONS

2" x 2" Angle Iron
1" x 1" Square Tubing
Painted OSHA Yellow

© 2009 MOLDERS CHOICE, Inc.



24 Hour Service - 7 Days a week

1-800-809-4623

WebSite: www.molderschoice.com

E-mail: molders@molderschoice.com

LAPEYRE SAFETY STAIRS

For use with Material Platforms over Injection Units



Unique alternating tread design provides a greater tread depth permitting comfortable face-forward descents.

Cushioned center stringer all but eliminates the possibility of hitting the nosing of a tread.

Close-fitting handrails fit under the user's arms - provides better support than steep stairs or ladders.

Small items can easily be carried up or down the stairs



Developed By a Molder for All Molders!

- Meets OSHA Code
- Safer than ship's or vertical ladders
- Over 26,000 in use worldwide
- Custom built to order (allow 2-3 weeks delivery)



Vertical Rise		Carbon Steel Yellow Powder Coat Finish	Carbon Steel Hot Dipped Galvanized	Aluminum Natural Finish 68 Degree	Vertical Rise		Carbon Steel Yellow Powder Coat Finish	Carbon Steel Hot Dipped Galvanized	Aluminum Natural Finish 68 Degree
Feet	Inches	56/68 Degree	56/85 Degree		Feet	Inches	56/68 Degree	56/85 Degree	
2	24	N/A	N/A	Inquire	9	108	Inquire	Inquire	Inquire
2-1/2	30	N/A	N/A	Inquire	9-1/2	114	Inquire	Inquire	Inquire
3	36	Inquire	Inquire	Inquire	10	120	Inquire	Inquire	Inquire
3-1/2	42	Inquire	Inquire	Inquire	10-1/2	126	Inquire	Inquire	Inquire
4	48	Inquire	Inquire	Inquire	11	132	Inquire	Inquire	Inquire
4-1/2	54	Inquire	Inquire	Inquire	11-1/2	138	Inquire	Inquire	Inquire
5	60	Inquire	Inquire	Inquire	12	144	Inquire	Inquire	Inquire
5-1/2	66	Inquire	Inquire	Inquire	12-1/2	150	Inquire	Inquire	Inquire
6	72	Inquire	Inquire	Inquire	13	156	Inquire	Inquire	Inquire
6-1/2	78	Inquire	Inquire	Inquire	13-1/2	162	Inquire	Inquire	Inquire
7	84	Inquire	Inquire	Inquire	14	168	Inquire	Inquire	Inquire
7-1/2	90	Inquire	Inquire	Inquire	14-1/2	174	Inquire	Inquire	Inquire
8	96	Inquire	Inquire	Inquire	15	180	Inquire	Inquire	Inquire
8-1/2	102	Inquire	Inquire	Inquire					

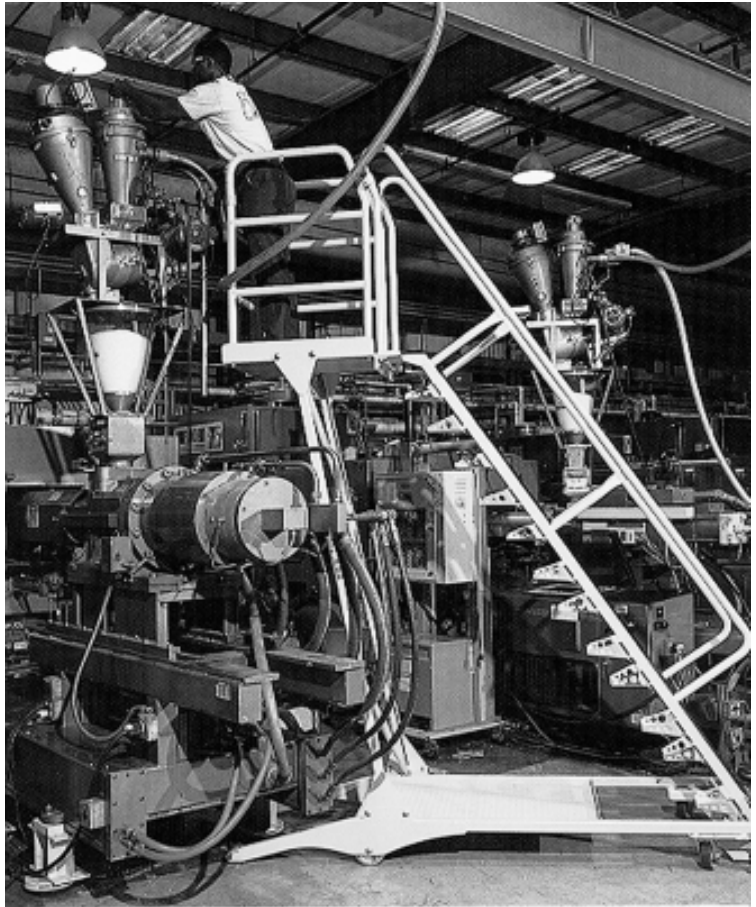
Inquire for stairs up to 20'

© 2011 MOLDERS CHOICE, Inc.



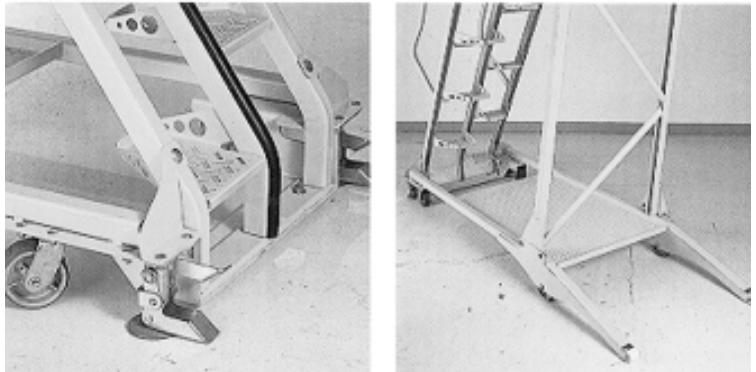
24 Hour Service - 7 Days a week
1-800-809-4623
 WebSite: www.molderschoice.com • Email: modlers@molderschoice.com

LAPEYRE SAFETY MOBILE STAIR



Lapeyre® Mobile Stairs provide stability and safety that no other mobile stairs offer. Safety features include alternating tread design, close-fitting handrails and a cushioned center stringer.

The semi-cantilevered design, combined with a platform, allows the user to work safely and easily over heavy equipment and conveyors. An equipment platform at the base provides stability to the stairs and ample storage for tools. Moving the stair is made easy with polyurethane, 900 lb-load casters. Dependable, easy-to-use floor locks add to the stair's sturdiness.



Materials &

Finishes: Carbon Steel in Safety Yellow Powder Coat

Heights: 3', 4', 5', 6', 7' and 8'

Angle: 56 degrees

PART#	HEIGHT	PRICES	PART#	HEIGHT	PRICES
MSCS3	3'	Inquire	MSCS6	6'	Inquire
MSCS4	4'	Inquire	MSCS7	7'	Inquire
MSCS5	5'	Inquire	MSCS8	8'	Inquire

© 2011 MOLDERS CHOICE, Inc.



24 Hour Service - 7 Days a week
1-800-809-4623
 WebSite: www.molderschoice.com • Email: modlers@molderschoice.com