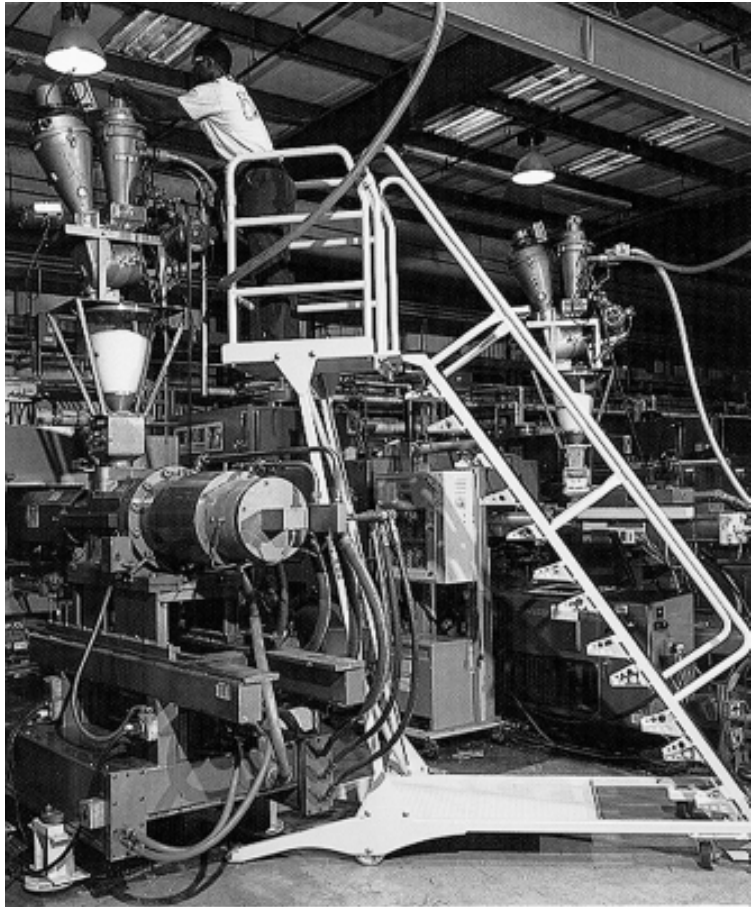


# LAPEYRE SAFETY MOBILE STAIR



Lapeyre® Mobile Stairs provide stability and safety that no other mobile stairs offer. Safety features include alternating tread design, close-fitting handrails and a cushioned center stringer.

The semi-cantilevered design, combined with a platform, allows the user to work safely and easily over heavy equipment and conveyors. An equipment platform at the base provides stability to the stairs and ample storage for tools. Moving the stair is made easy with polyurethane, 900 lb-load casters. Dependable, easy-to-use floor locks add to the stair's sturdiness.



**Materials &**

**Finishes:** Carbon Steel in Safety Yellow Powder Coat

**Heights:** 3', 4', 5', 6', 7' and 8'

**Angle:** 56 degrees

PART#	HEIGHT	PRICES	PART#	HEIGHT	PRICES
MSCS3	3'	Inquire	MSCS6	6'	Inquire
MSCS4	4'	Inquire	MSCS7	7'	Inquire
MSCS5	5'	Inquire	MSCS8	8'	Inquire

© 2011 MOLDERS CHOICE, Inc.



**24 Hour Service - 7 Days a week**  
1-800-809-4623  
 WebSite: [www.molderschoice.com](http://www.molderschoice.com) • Email: [molders@molderschoice.com](mailto:molders@molderschoice.com)