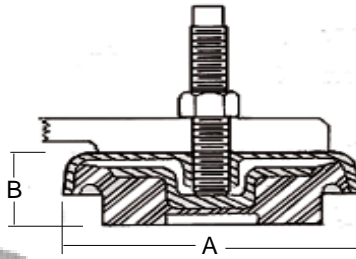
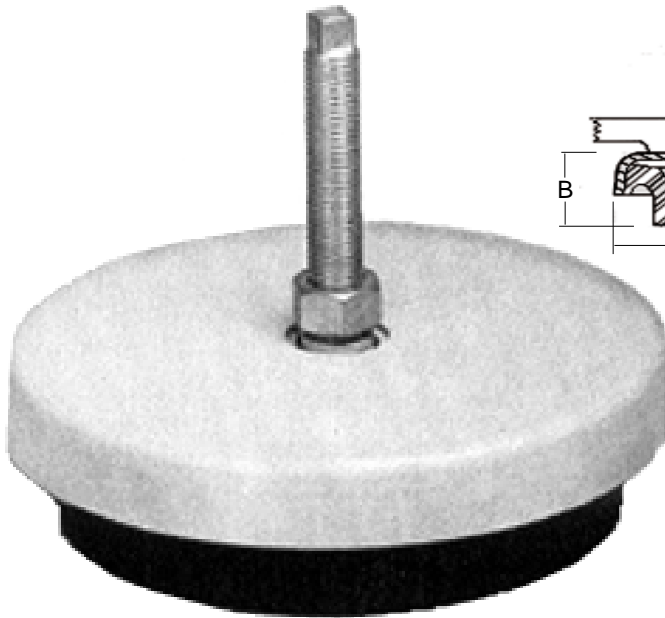


MOUNTING PADS



- For use with all Injection Molding Presses
- Heavy Duty Design

How To Order DIVIDE

$$\frac{\text{Weight of machine}}{\text{Number of mounting points}} = \frac{\text{Maximum load}}{\text{per mount}}$$

**Meets OSHA
Safety Standards**

High vibration and shock isolation. A full inch of neoprene provides controlled deflection under load, providing high isolation efficiency for vibration and shock forces.

Built-in leveling features. Mounts are adjustable up to a full half-inch above loaded height by a few turns of the leveling bolt. Tightening the check nut then maintains the exact height you need.

Durability. Corrosion-resistant outer housing provides high strength.

Neoprene elastomer resists oil, grease, ozones, caustics. Cadmium-plated hardware resists rust.

Application. Five standard-size mounts, each with a broad load range, handle any size machine.

PART#	LOAD RANGE RATING PER MOUNT (LBS)	BASE (INCHES)		BOLT (INCHES)			PRICES
		OUTSIDE DIA. A	FREE HEIGHT B	SIZE	LENGTH	WT.	
LM0-B	30-100	2	1	1/4 x 28	1-3/4	4 ozs.	\$22.00 each
LM1-B	100-300	3-1/8	1-1/2	3/8 x 24	3	1 lbs. 4 ozs.	\$30.00 each
LM3-B	300-1000	4-3/4	1-1/2	1/2 x 13	5	2 lbs. 5 ozs.	\$42.00 each
LM5-B	1000-4200	6-5/16	1-5/8	3/4 x 10	5	5 lbs. 2 ozs.	\$59.00 each
LM7-B	4000-13,000	9	2-1/2	1 x 14	8	12 lbs. 11 ozs.	\$129.00 each
*LM9-B	4000-13,000	9	2-1/4	1 x 14	8	12 lbs. 14 ozs.	\$129.00each

*Formerly 10295AB, LM9B should be substituted for LM7-B in application with heavy horizontal forces. Outline dimensions and load rating are the same, except for B dimension which is 2-1/4"

Leveling bolt and checknut are furnished with each mounting pad.

- Note:**
- (1) Bushings and special bolt sizes can be specified when ordering.
 - (2) All height dimensions indicate free height of mount under no load.



© 2009 MOLDERS CHOICE, Inc.

24 Hour Service - 7 Days a week
1-800-809-4623

WebSite: www.molderschoice.com • Email: molders@molderschoice.com