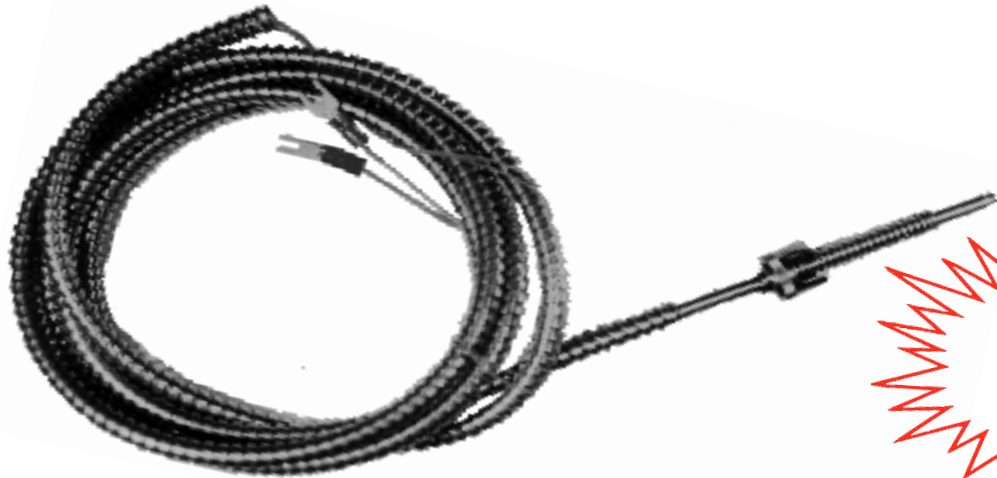


THERMOCOUPLES - BAYONET

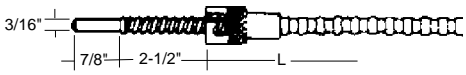
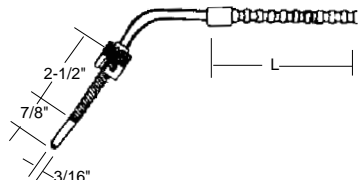
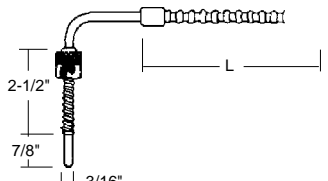


In Stock for
 immediate
 shipment
 1-800-809-4623

THE BAYONET Style Thermocouples are the most widely used thermocouple in the plastics industry. All styles are available in straight, 45° and 90° bend with flexible stainless steel leads. MOLDERS CHOICE offers all thermocouples in both TYPE J (iron - constantan) and TYPE K (chromel - alumel)

PRICES

(When Ordering, add J or K to end of part number)

STYLE	PART#	L	TYPE J	TYPE K
STRAIGHT 	TSS36	36	\$20.00	\$25.00
	TSS48	48	\$21.00	\$29.00
	TSS60	60	\$22.00	\$27.00
	TSS72	72	\$25.00	\$30.00
	TSS84	84	\$28.00	\$35.00
45° BEND 	T4536	36	\$20.00	\$22.00
	T4548	48	\$22.00	\$24.00
	T4560	60	\$26.00	\$28.00
	T4572	72	\$30.00	\$32.00
	T4584	84	\$34.00	\$36.00
90° BEND 	T9036	36	\$17.00	\$20.00
	T9048	48	\$18.00	\$21.00
	T9060	60	\$27.00	\$30.00
	T9072	72	\$30.00	\$33.00
	T9084	84	\$32.00	\$35.00

© 2013 MOLDERS CHOICE, Inc.



24 Hour Service - 7 Days a week

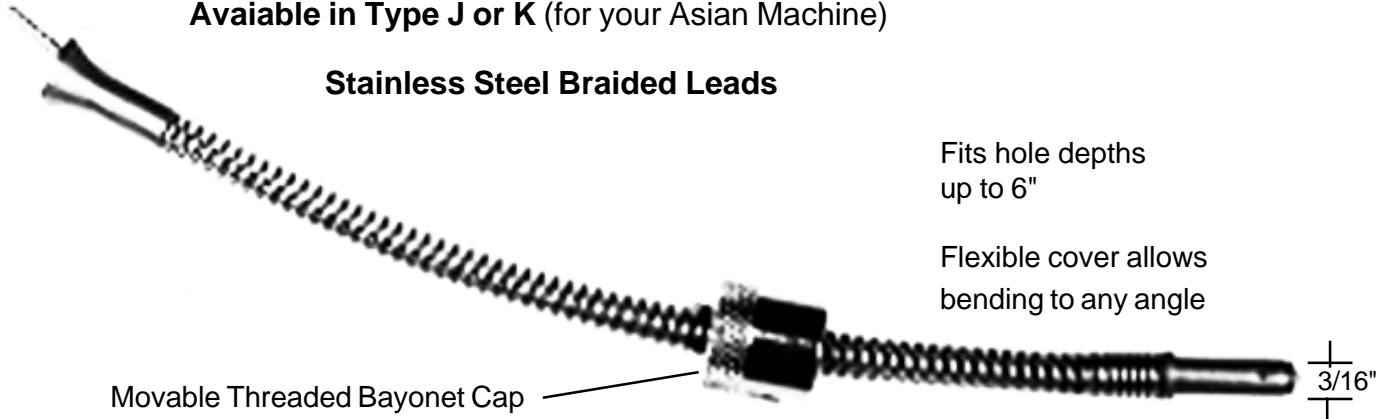
1-800-809-4623

WebSite: www.molderschoice.com E-mail: molders@molderschoice.com

VARI-DEPTH THERMOCOUPLES

Available in Type J or K (for your Asian Machine)

Stainless Steel Braided Leads



Fits hole depths up to 6"

Flexible cover allows bending to any angle

Movable Threaded Bayonet Cap

3/16"

MOLDERS CHOICE offers VARI-DEPTH Thermocouples if you want to stock your tool room with all different styles and configurations-you need only 1 style. The VARI-DEPTH fits hole depths up to 6".

One style fits almost any application.

Lets you avoid stocking your tool room with all different styles and configurations.

Type "J" is iron-constantan wire for temperature readings up to **1382° F** (European & US Machine)

Type "K" is a chromed-alumel wire for temperature readings up to **2282° F** (Most Asian Machines)

PART #	Lead length	Style	PRICE
TAF36J	36"	J	\$12.00
TAF36K	36"	K	\$12.00
TAF48J	48"	J	\$15.00
TAF48K	48"	K	\$17.00
TAF60J	60"	J	\$20.00
TAF60K	60"	K	\$20.00
TAF72J	72"	J	\$22.00
TAF72K	72"	K	\$22.00
TAF84J	84"	J	\$24.00
TAF84K	84"	K	\$24.00

All Thermocouples are grounded. Ungrounded available upon request.

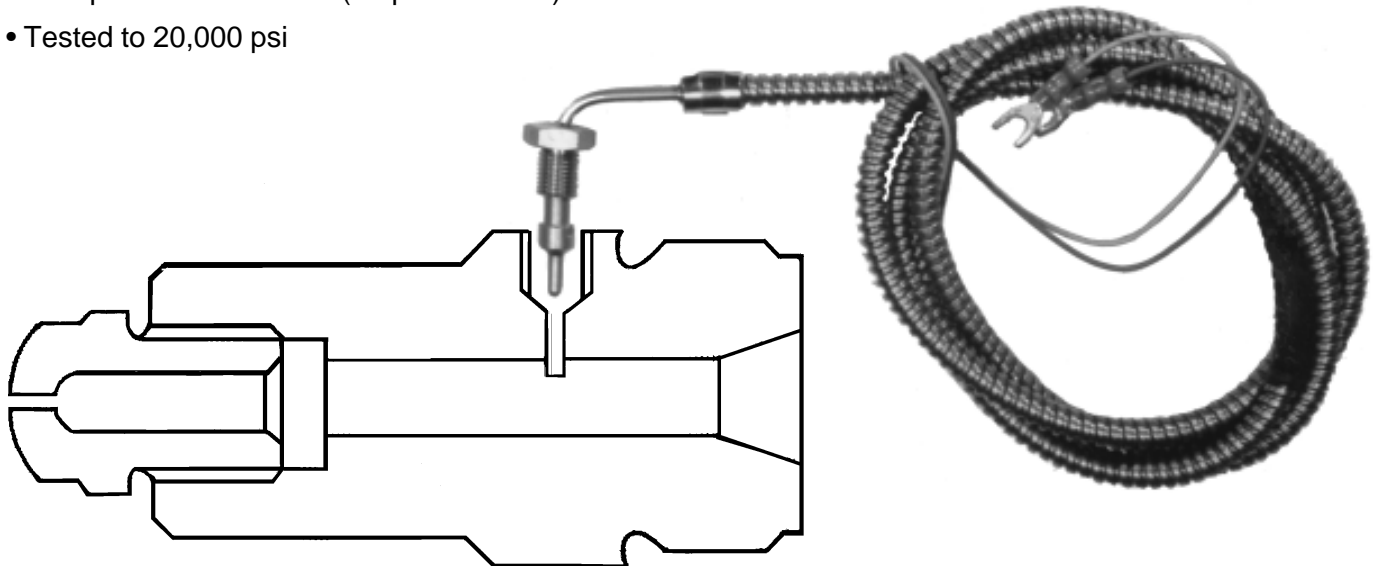


© 2014 MOLDERS CHOICE, Inc.

24 Hour Service - 7 Days a week
1-800-809-4623
 WebSite: www.molderschoice.com • Email: molders@molderschoice.com

IN-MELT THERMOCOUPLE

- In-Melt Thermocouple with Swivel Nut
- One-piece Construction (no parts to lose)
- Tested to 20,000 psi



MOLDERS CHOICE IN-MELT THERMOCOUPLES are the best thermocouples available when you need to know the exact melt temp. In today's market, keeping up with quality, you must have complete process control. Knowing and controlling the melt temperature will help you improve part quality.

PART#	Description	Lead length	Type	PRICE
TM48J	3/8 x 24 Thread	48"	J	\$42.00
TM48K	3/8 x 24 Thread	48"	K	\$42.00
TM72J	3/8 x 24 Thread	72"	J	\$52.00
TM72K	3/8 x 24 Thread	72"	K	\$52.00
TM72J-M12	M12 x 1 Thread for Demag Presses	72"	J	\$200.00
TCMELTG	Grounded Style	48"	J	\$68.00
MPLUG3824	Plug for 3/8 x 24			\$9.60
M12X1PLUG	Plug for M12 X 1			\$12.00

© 2009 MOLDERS CHOICE, Inc.



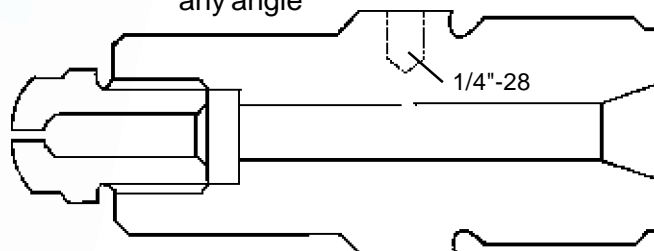
24 Hour Service - 7 Days a week
1-800-809-4623

WebSite: www.molderschoice.com • Email: molders@molderschoice.com

NOZZLE THERMOCOUPLE



1/4-28 Thread
Rotatable Nut
Available in Type J and K
Flexible Cover allows bending to any angle

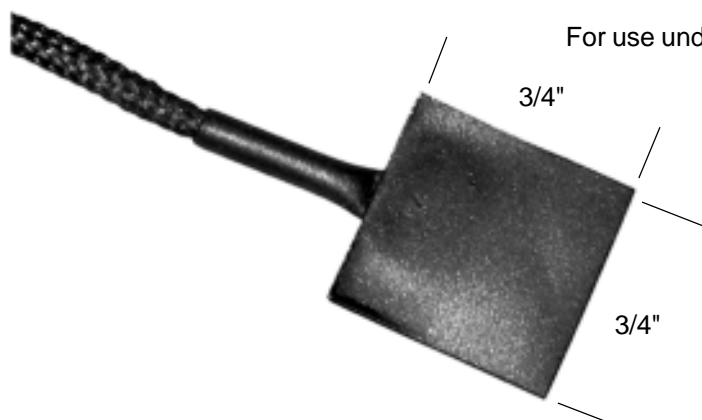


PART#	Lead Length	Type	PRICE
TN36J	36	J	\$10.00
TN36K	36	K	\$15.00
TN48J	48	J	\$15.00
TN48K	48	K	\$15.00
TN60J	60	J	\$15.00
TN60K	60	K	\$15.00
TN72J	72	J	\$20.00
TN72K	72	K	\$20.00
TN84J	84	J	\$19.00
TN84K	84	K	\$19.00

DRILLING AND TAPPING INSTRUCTIONS:

- 1).213" drill, 1/4" deep on hex flat
- 2) Tap with 1/4"-28 Bottoming Tap

SPADE-TYPE THERMOCOUPLE



For use under heater band when standard T/C will not fit into a mold recess

AVAILABLE IN BOTH TYPE J and K

PART#	Lead Length	TYPE	PRICE
TSP48J	48"	J	\$15.00
TSP48K	48"	K	\$18.00
TSP72J	72"	J	\$20.00
TSP72K	72"	K	\$20.00



© 2014 MOLDERS CHOICE, Inc.

24 Hour Service - 7 Days a week

1-800-809-4623

WebSite: www.molderschoice.com

E-mail: molders@molderschoice.com

SPECIAL THERMOCOUPLES

Compression Type



Washer Type



IN STOCK - TYPE "J" AND "K" STYLES

Compression-Type Thermocouples		
DESCRIPTION (Includes 1/8" NPT Compression Fitting)	PART #	PRICE
Thermocouple with 3" Probe and 36" leads	TCOM3-36	\$18.00
Thermocouple with 3" Probe and 48" leads	TCOM3-48	\$30.00
Thermocouple with 3" Probe and 48" leads 90 degree bend	TCOM3-4890	\$22.00
Thermocouple with 5" Probe and 48" leads	TCOM5-48	\$22.00
Thermocouple with 5" Probe and 96" leads	TCOM5-96	\$48.00
Thermocouple with 12" Bendable Probe, 48" leads	TCOM12-48	\$25.00
Washer-Type Thermocouple	PART #	PRICE
Washer Type Thermocouple with 36" leads. Fits 1/4" stud	TW1436J	\$13.00
Washer Type Thermocouple with 36" leads. Fits 1/4" stud, Type K	TW1436K	\$14.00
Washer Type Thermocouple with 48" leads. Fits 1/4" stud	TW1448J	\$15.00
Washer Type Thermocouple with 72" leads. Fits 1/4" stud Type K	TW1472K	\$16.50
Washer Type Thermocouple with 36" leads. Fits 3/16" stud	TW31636J	\$11.30
Washer Type Thermocouple with 36" leads. Fits 3/16" stud Type K	TW31636K	\$11.30
Washer Type Thermocouple with 48" leads. Fits 3/16" stud	TW31648J	\$12.50
Washer Type Thermocouple with 72" leads. Fits 3/16" stud	TW31672J	\$14.00
Washer Type Thermocouple with 96" leads. Fits 3/16" stud	TW31696J	\$16.00

© 2009 MOLDERS CHOICE, Inc.

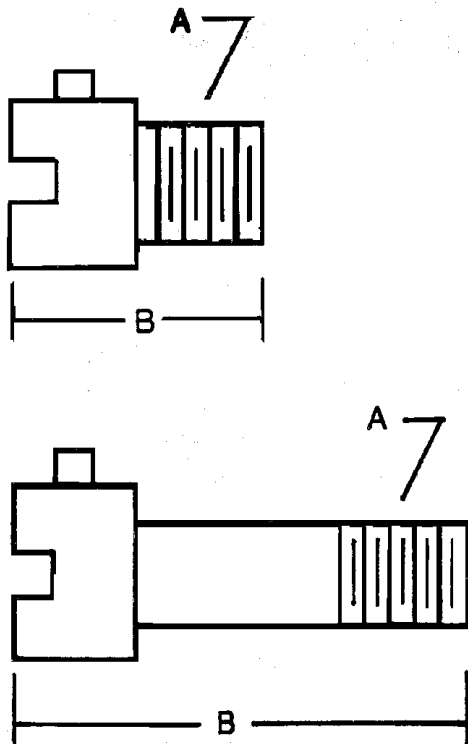


24 Hour Service - 7 Days a week

1-800-809-4623

WebSite: www.molderschoice.com • Email: molders@molderschoice.com

HEATER BAND & THERMOCOUPLE ACCESSORIES



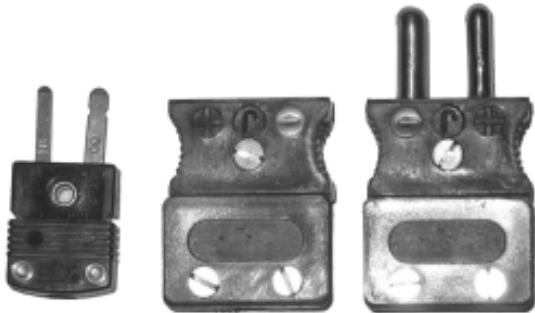
ADAPTERS

PART #	Thread size (A)	Length (B)	PRICE
TP875-1	1/8 -27npt	7/8"	\$1.80
TP1250-1	1/8-27npt	1-1/4"	\$2.30
TP1500-1	1/8 -27npt	1-1/2"	\$2.40
TP2500-1	1/8 -27npt	2-1/2"	\$2.81
TP875 -2	3/8-24nf	7/8"	\$3.50
TP1500-2	3/8-24nf	1-1/2"	\$6.50
TP2500-2	3/8-24nf	2-1/2"	\$6.50
TP1250-3	10mm-1.5mm	1-1/4"	\$7.30
TP2250 3	10mm-1.5mm	2-1/4"	\$8.80
TP1250-4	12mm-1.75mm	1-1/4"	\$10.00
TP2250-4	12mm-1.75mm	2-1/4"	\$12.00

Thermocouple WIRE

PART #	DESCRIPTION	PRICE
TWJ	Type-J 24 GAUGE -SOLID GLASS BRAID	\$.53/FT
TWK	Type-K 24 GAUGE SOLID -GLASS BRAID	\$.43/FT

Thermocouple PLUGS



PART #	Description	PRICE
PPMJ	Polarized Male Plug Type J	\$4.00
PPFJ	Polarized Female Plug Type J	\$4.00
MPJ-BK	Type J Minim Plug - Black	\$2.50
1210-K	Thermocouple Female Mini Jack K-Type	\$4.30
1260-K	Thermocouple Male Mini Plug K-Type	\$4.30

© 2018 MOLDERS CHOICE, Inc.



24 Hour Service - 7 Days a week

1-800-809-4623

WebSite: www.molderschoice.comE-mail: molders@molderschoice.com