

StepGuard™

Protect your Molding Machine Investment & Your Plant Personnel



Eliminates Inadvertent Valve Damage

- Safely Service and Load Hopper
- Stop your people from climbing on machine
- Prevents damaging expensive machine components
- Easy service to Injection Unit
- Protects entire manifold & valves
- Easy installation
- Detaches from machine fast, using quick release pins

*Custom designed for your specific injection machine
or we may already have your specs!
(Allow 2 - 3 weeks for manufacturing)*

| MODEL | | PRICE |
|-------|-----------|---------|
| SG | StepGuard | INQUIRE |

*Quantity discounts available - Inquire

To Order: Call and request a Special order form, complete the form with Size of Machine along with Model # and Serial #, and Fax back to us. We will call you back promptly with Pricing & Delivery

Requires drilling and anchoring to machine base.

SPECIFICATIONS

1" x 1" Square Tubing
6" C-channel construction
Painted OSHA Yellow

MATERIAL HANDLING STANDS

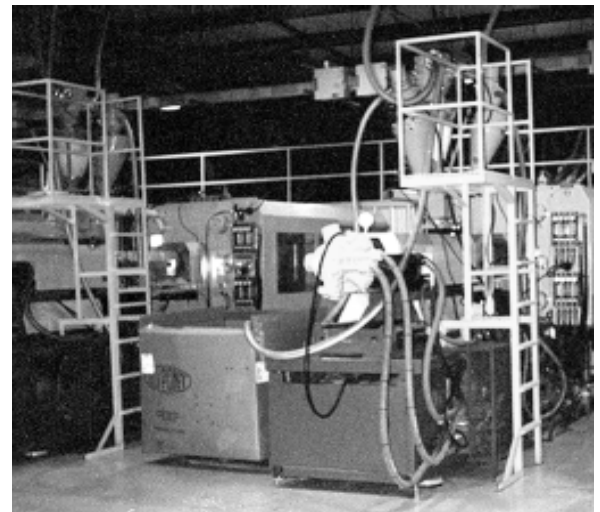
Create a much safer plant environment

- Enable Safe Hopper loading
- Let you Service Material Loaders & Dryers easily
- Eliminate using unsafe, flimsy ladders
- Stop your people from climbing on machine
- Prevent damaging expensive machine components
- Clean-up plant layout

*Custom Designed for your Specific Injection Machine
(Allow 3-4 weeks for manufacturing)*

| PART # | PRESS SIZE RANGE | PRICE |
|--------|------------------|---------|
| MHS1 | 50 to 150 TON | INQUIRE |
| MHS2 | 160 to 300 TON | INQUIRE |
| MHS3 | 310 to 500 TON | INQUIRE |
| MHS4 | OVER 500 TON | INQUIRE |

To Order: Call for Order form, then complete form and fax back for Quote.
Quickly Bolts together.
Does require drilling machine base & plant floor.



SPECIFICATIONS

2" x 2" Angle Iron
1" x 1" Square Tubing
Painted OSHA Yellow

© 2009 MOLDERS CHOICE, Inc.



24 Hour Service - 7 Days a week

1-800-809-4623

WebSite: www.molderschoice.com

E-mail: molders@molderschoice.com

LAPEYRE SAFETY STAIRS

For use with Material Platforms over Injection Units



Unique alternating tread design provides a greater tread depth permitting comfortable face-forward descents.

Cushioned center stringer all but eliminates the possibility of hitting the nosing of a tread.

Close-fitting handrails fit under the user's arms - provides better support than steep stairs or ladders.

Small items can easily be carried up or down the stairs



Developed By a Molder for All Molders!

- Meets OSHA Code
- Safer than ship's or vertical ladders
- Over 26,000 in use worldwide
- Custom built to order (allow 2-3 weeks delivery)



| Vertical Rise | | Carbon Steel Yellow Powder Coat Finish | Carbon Steel Hot Dipped Galvanized | Aluminum Natural Finish 68 Degree | Vertical Rise | | Carbon Steel Yellow Powder Coat Finish | Carbon Steel Hot Dipped Galvanized | Aluminum Natural Finish 68 Degree |
|---------------|--------|--|--|---|---------------|--------|--|--|---|
| Feet | Inches | 56/68 Degree | 56/85 Degree | | Feet | Inches | 56/68 Degree | 56/85 Degree | |
| 2 | 24 | N/A | N/A | Inquire | 9 | 108 | Inquire | Inquire | Inquire |
| 2-1/2 | 30 | N/A | N/A | Inquire | 9-1/2 | 114 | Inquire | Inquire | Inquire |
| 3 | 36 | Inquire | Inquire | Inquire | 10 | 120 | Inquire | Inquire | Inquire |
| 3-1/2 | 42 | Inquire | Inquire | Inquire | 10-1/2 | 126 | Inquire | Inquire | Inquire |
| 4 | 48 | Inquire | Inquire | Inquire | 11 | 132 | Inquire | Inquire | Inquire |
| 4-1/2 | 54 | Inquire | Inquire | Inquire | 11-1/2 | 138 | Inquire | Inquire | Inquire |
| 5 | 60 | Inquire | Inquire | Inquire | 12 | 144 | Inquire | Inquire | Inquire |
| 5-1/2 | 66 | Inquire | Inquire | Inquire | 12-1/2 | 150 | Inquire | Inquire | Inquire |
| 6 | 72 | Inquire | Inquire | Inquire | 13 | 156 | Inquire | Inquire | Inquire |
| 6-1/2 | 78 | Inquire | Inquire | Inquire | 13-1/2 | 162 | Inquire | Inquire | Inquire |
| 7 | 84 | Inquire | Inquire | Inquire | 14 | 168 | Inquire | Inquire | Inquire |
| 7-1/2 | 90 | Inquire | Inquire | Inquire | 14-1/2 | 174 | Inquire | Inquire | Inquire |
| 8 | 96 | Inquire | Inquire | Inquire | 15 | 180 | Inquire | Inquire | Inquire |
| 8-1/2 | 102 | Inquire | Inquire | Inquire | | | | | |

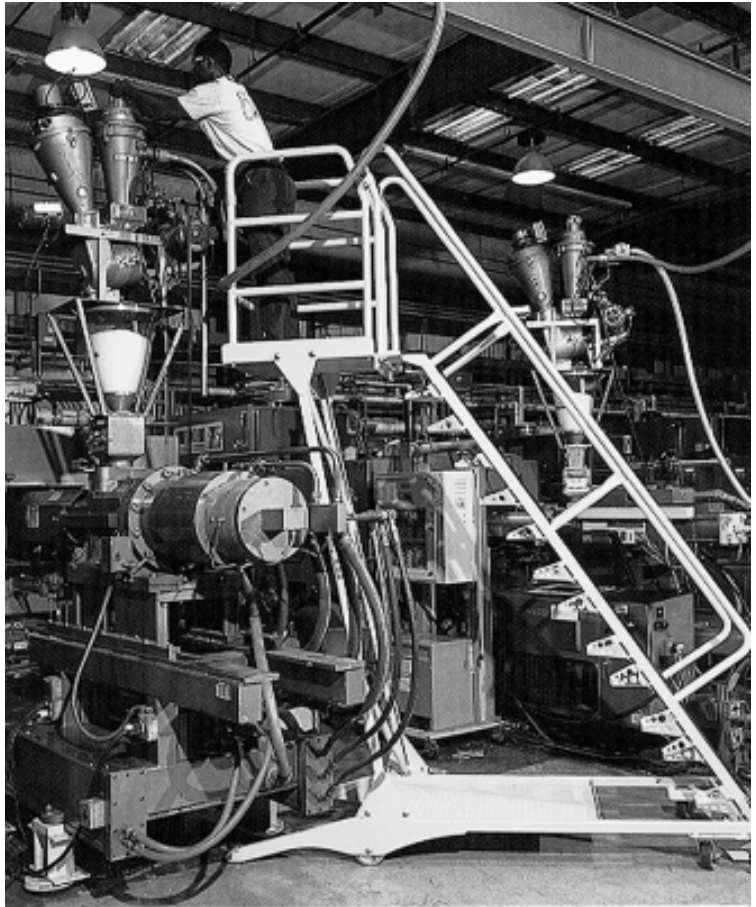
Inquire for stairs up to 20'

© 2011 MOLDERS CHOICE, Inc.



24 Hour Service - 7 Days a week
1-800-809-4623
 WebSite: www.molderschoice.com • Email: modlers@molderschoice.com

LAPEYRE SAFETY MOBILE STAIR



Lapeyre® Mobile Stairs provide stability and safety that no other mobile stairs offer. Safety features include alternating tread design, close-fitting handrails and a cushioned center stringer.

The semi-cantilevered design, combined with a platform, allows the user to work safely and easily over heavy equipment and conveyors. An equipment platform at the base provides stability to the stairs and ample storage for tools. Moving the stair is made easy with polyurethane, 900 lb-load casters. Dependable, easy-to-use floor locks add to the stair's sturdiness.



Materials &

Finishes: Carbon Steel in Safety Yellow Powder Coat

Heights: 3', 4', 5', 6', 7' and 8'

Angle: 56 degrees

| PART# | HEIGHT | PRICES | PART# | HEIGHT | PRICES |
|-------|--------|---------|-------|--------|---------|
| MSCS3 | 3' | Inquire | MSCS6 | 6' | Inquire |
| MSCS4 | 4' | Inquire | MSCS7 | 7' | Inquire |
| MSCS5 | 5' | Inquire | MSCS8 | 8' | Inquire |

© 2011 MOLDERS CHOICE, Inc.



24 Hour Service - 7 Days a week

1-800-809-4623

WebSite: www.molderschoice.com • Email: modlers@molderschoice.com