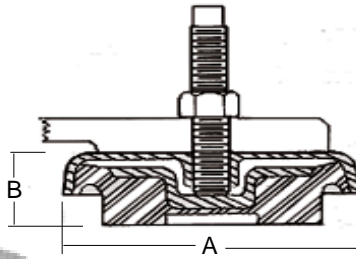
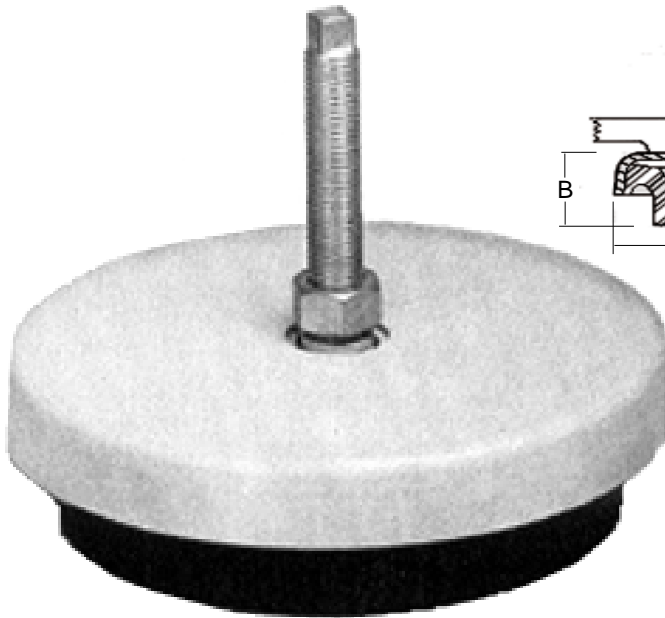


MOUNTING PADS



- For use with all Injection Molding Presses
- Heavy Duty Design

How To Order

$$\frac{\text{Weight of machine}}{\text{Number of mounting points}} = \frac{\text{Maximum load}}{\text{per mount}}$$

**Meets OSHA
Safety Standards**

High vibration and shock isolation. A full inch of neoprene provides controlled deflection under load, providing high isolation efficiency for vibration and shock forces.

Built-in leveling features. Mounts are adjustable up to a full half-inch above loaded height by a few turns of the leveling bolt. Tightening the check nut then maintains the exact height you need.

Durability. Corrosion-resistant outer housing provides high strength.

Neoprene elastomer resists oil, grease, ozones, caustics. Cadmium-plated hardware resists rust.

Application. Five standard-size mounts, each with a broad load range, handle any size machine.

| PART# | LOAD RANGE RATING PER MOUNT (LBS) | BASE (INCHES) | | BOLT (INCHES) | | WT. | PRICES |
|--------|---|----------------------|---------------------|---------------|--------|-----------------|----------------------|
| | | OUTSIDE DIA. A | FREE HEIGHT B | SIZE | LENGTH | | |
| LM0-B | 30-100 | 2 | 1 | 1/4 x 28 | 1-3/4 | 4 ozs. | \$22.00 each |
| LM1-B | 100-300 | 3-1/8 | 1-1/2 | 3/8 x 24 | 3 | 1 lbs. 4 ozs. | \$30.00 each |
| LM3-B | 300-1000 | 4-3/4 | 1-1/2 | 1/2 x 13 | 5 | 2 lbs. 5 ozs. | \$42.00 each |
| LM5-B | 1000-4200 | 6-5/16 | 1-5/8 | 3/4 x 10 | 5 | 5 lbs. 2 ozs. | \$59.00 each |
| LM7-B | 4000-13,000 | 9 | 2-1/2 | 1 x 14 | 8 | 12 lbs. 11 ozs. | \$129.00 each |
| *LM9-B | 4000-13,000 | 9 | 2-1/4 | 1 x 14 | 8 | 12 lbs. 14 ozs. | \$129.00each |

*Formerly 10295AB, LM9B should be substituted for LM7-B in application with heavy horizontal forces. Outline dimensions and load rating are the same, except for B dimension which is 2-1/4"

Leveling bolt and checknut are furnished with each mounting pad.

- Note:**
- (1) Bushings and special bolt sizes can be specified when ordering.
 - (2) All height dimensions indicate free height of mount under no load.



© 2009 MOLDERS CHOICE, Inc.

24 Hour Service - 7 Days a week
1-800-809-4623

WebSite: www.molderschoice.com • Email: molders@molderschoice.com