

HEATER BANDS ACCESSORIES



WIRE LUGS			
PART #	Wire range	Stud size	PRICE
WL008	8	10	\$.40
WL1012	10-12	10	\$.40
WL1416	14-16	10	\$.40
WL1622	16-22	10	\$.40



WIRE SPLICERS			
PART #	Wire range	Material	PRICE
SPL1012	10-12	Nickel	\$.35
SPL1012NI	10-12	Nylon Insulated	\$.35
SPL1416	14-16	Nickel	\$.45
SPL1416NI	16-22	Nylon Insulated	\$.45
SPL1622	14-16	Nickel	\$.55
SPL1622NI	16-22	Nylon Insulated	\$.55



POST PROTECTORS			
PART #	Thread size	Material	PRICE
PP832	8-32	Ceramic	\$1.25
PP1024	10-24	Ceramic	\$1.25
PP1032	10-32	Ceramic	\$1.30
PP1420	1/4-20	Ceramic	\$3.30



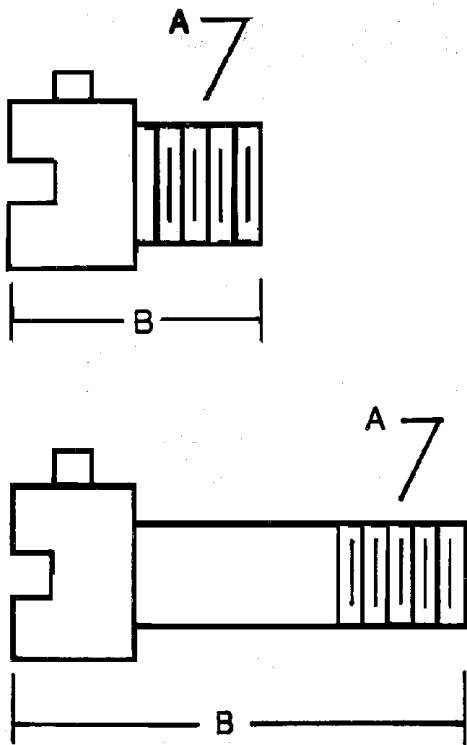
HIGH HEAT TAPE		
Glass cloth with silicone polymer adhesive good for temperatures up to 356° F. UL Recognized as flame retardant 3/4" wide x 40 ft. long	PART #	PRICE
		T34110



© 2009 MOLDERS CHOICE, Inc.

24 Hour Service - 7 Days a week
1-800-809-4623
 WebSite: www.molderschoice.com • Email: modlers@molderschoice.com

HEATER BAND & THERMOCOUPLE ACCESSORIES



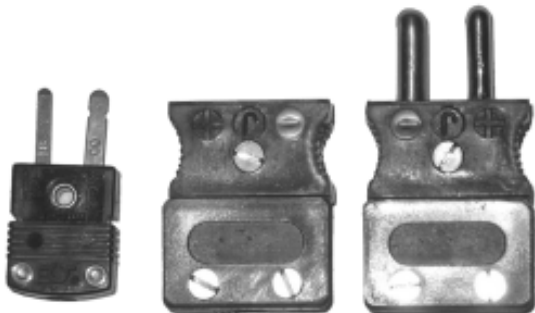
ADAPTERS

PART #	Thread size (A)	Length (B)	PRICE
TP875-1	1/8 -27npt	7/8"	\$1.60
TP1500-1	1/8 -27npt	1-1/2"	\$3.80
TP2500-1	1/8 -27npt	2-1/2"	\$5.00
TP875 -2	3/8-24nf	7/8"	\$1.60
TP1500-2	3/8-24nf	1-1/2"	\$3.80
TP2500-2	3/8-24nf	2-1/2"	\$5.00
TP1250-3	10mm-1.5mm	1-1/4"	\$7.30
TP2250 3	10mm-1.5mm	2-1/4"	\$8.80
TP1250-4	12mm-1.75mm	1-1/4"	\$7.30
TP2250-4	12mm-1.75mm	2-1/4"	\$8.80

Thermocouple WIRE

PART #	DESCRIPTION	PRICE
TWJ	Type-J 24 GAUGE -SOLID GLASS BRAID	\$.36/FT
TWK	Type-K 24 GAUGE SOLID -GLASS BRAID	\$.43/FT

Thermocouple PLUGS



PART #	Description	PRICE
PPMJ	Polarized Male Plug Type J	\$4.00
PPFJ	Polarized Female Plug Type J	\$4.00
MPJ-BK	Type J Minim Plug - Black	\$2.50
1210-K	Thermocouple Female Mini Jack K-Type	\$4.30
1260-K	Thermocouple Male Mini Plug K-Type	\$4.30

© 2009 MOLDERS CHOICE, Inc.



24 Hour Service - 7 Days a week

1-800-809-4623

WebSite: www.molderschoice.comE-mail: molders@molderschoice.com