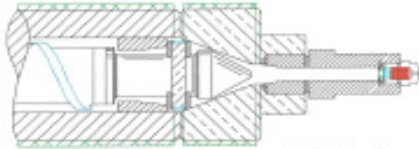


MINI SHUT OFF TIP

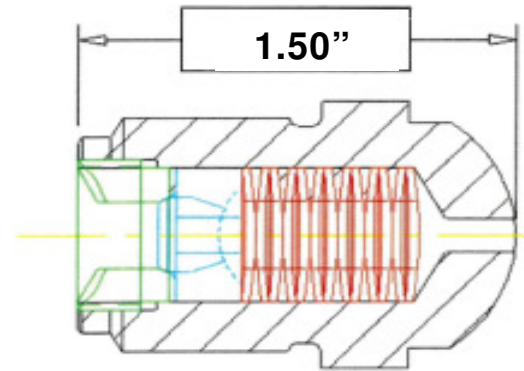
“The Worlds Smallest Shut Off Tip”

Designed to replace a standard tip in a removable tip nozzle, the new shut off tip covers your open nozzle into an efficient shut off nozzle in seconds.



Mini-Shut™ BENEFITS & Features

- Eliminate Melt-Decompression
- Eliminate Drooling
- Eliminate Stringing
- Improved Part Weight Consistency
- Easy to install and remove
- Inexpensive
- Fits in Virtually all Nozzle Bodies
- Operate the Clamp and Screw Simultaneously
- Lower Pressure Drop, Low Shear
- Operating Temperature of + 750° F / 398° C
- Easy to clean with Purging Techniques



NOZZLE ORIFICE 1/16" - 1/4"

USA STANDARD SIZE BORE 7/8-14

PRICE

\$269.00

NOZZLE ORIFICE 1/8" - 3/16"

USA BIG BORE STANDARD 1-1/4x12

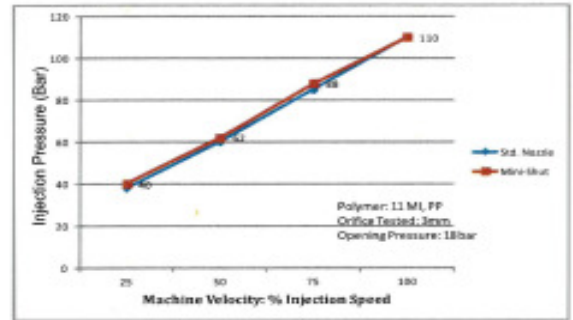
\$359.00

NOZZLE ORIFICE 1/8" - 3/16"

EU (ARBURG-DEMAG) STANDARD M24x1.5

\$289.00

Minimal Pressure Drop



Theory vs. Reality

Control of the Melting process depends on a number of factors including the proper screw and screw tip design, setting variables such as back pressure, barrel temperatures, screw speed and melt decomposition.

If we could eliminate the need for Melt Decompression which is used to eliminate drooling and stringing, the process becomes more stable and many surface imperfections become obsolete!



24 Hour Service - 7 Days a week
1-800-809-4623
 WebSite: www.molderschoice.com • Email: molders@molderschoice.com

FUCHSLOCHER SHUT-OFF NOZZLES

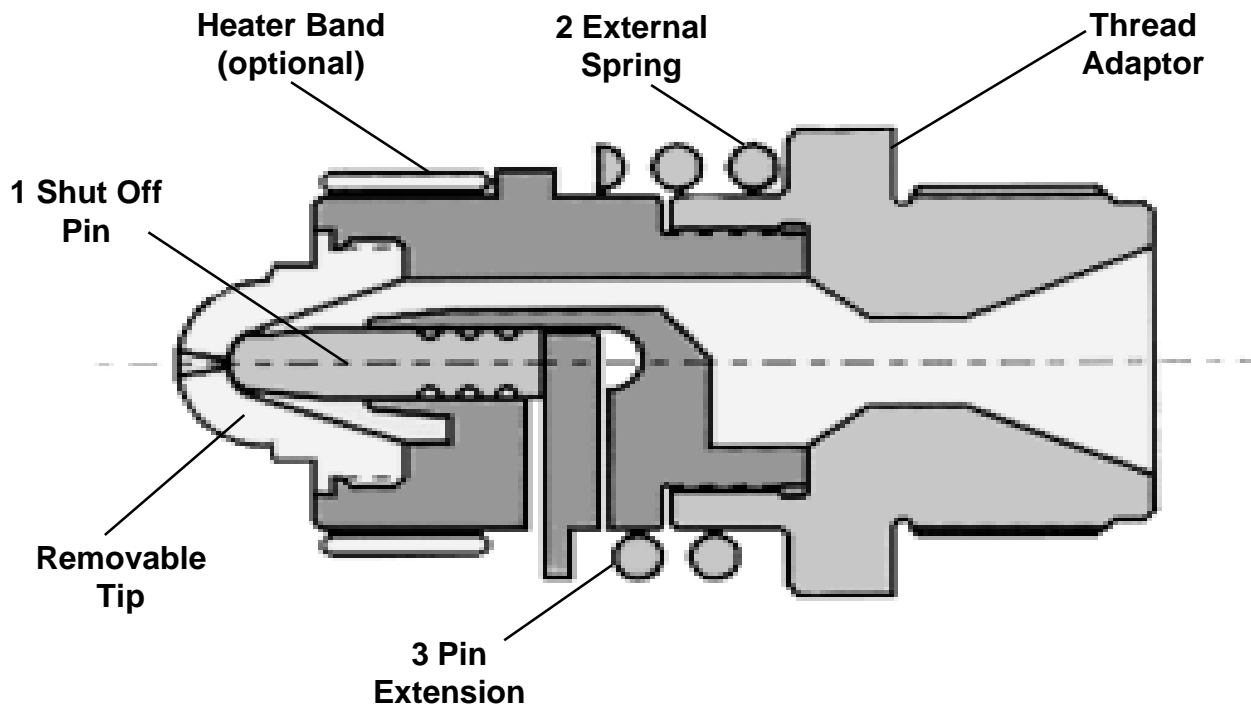
OPERATING PROCEDURES

The Fuschlocher SHUT-OFF NOZZLE is designed to be fully automatic and mechanical. Its movement is generated by the machine injection cycle.

During injection, the plastic material forces the shut-off pin (1) back against the spring tension (2) on the pin extension (3). The material then flows without restriction through the sprue bushing into the mold.

When the injection cycle is complete, no pressure is present. The spring (2) closes the shut-off pin (1) by means of the pin extension (3) against the inside nozzle orifice.

Since the nozzle tip is of a nylon, reverse taper design, cold slugs and stringing are now eliminated.



- **CRACKING PRESSURE 1800 psi**
(Max. Screw Back Pressure)

- **PRESSURE TO OPEN FULLY**

1/8" orifice 1900 psi
5/32" orifice 2000 psi
3/16" orifice 2100 psi

NOTE: Pressures are in lbs. per square inch of plastic melt. In most cases the hydraulic pressure of the machine will be one tenth of the above values. It should be noted, however, that the hydraulic oil to plastic ratio is not always one-to-ten.

© 2008 MOLDERS CHOICE, Inc.



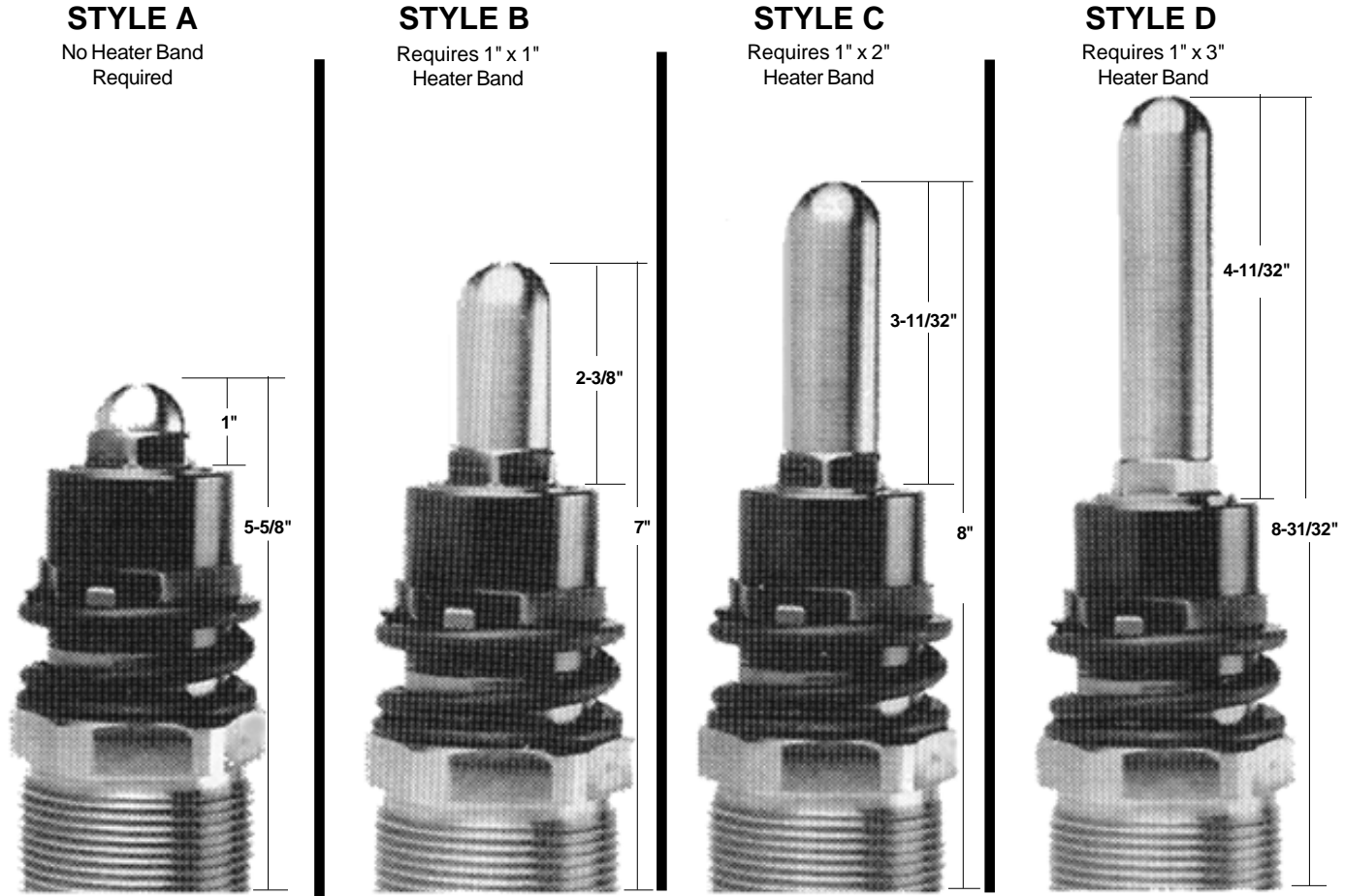
24 Hour Service - 7 Days a week

1-800-809-4623

WebSite: www.molderschoice.com

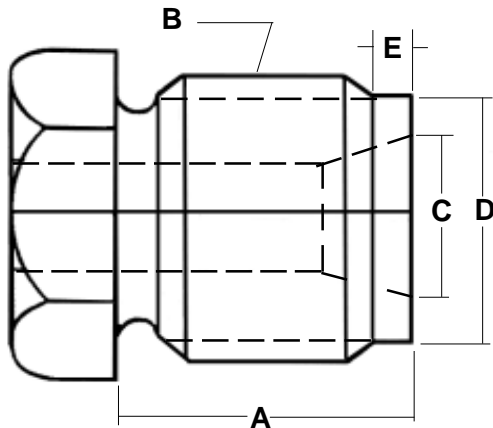
E-mail: molders@molderschoice.com

FUCHSLOCHER SHUT-OFF NOZZLES



STYLE A	STYLE B	STYLE C	STYLE D
\$1680.00	\$1720.00	\$1790.00	\$1800.00
Extra Tip P/N FTA \$140.00	Extra Tip P/N FTB \$174.00	Extra Tip P/N FTC \$208.00	Extra Tip P/N FTD \$243.00

Body Requires 2" x 1" Heater Band: P/N HBS067 (120V) or HBS068 (240V)



TO ORDER: PLEASE ADVISE FOLLOWING

- A. Thread Length (includes relief)
- B. Thread Size
- C. Rear Opening Dia.
- D. Relief Diameter
- E. Relief Length
- F. Radius (1/2" or 3/4")
- G. Orifice (1/8", 5/32", 3/16", or 1/4")
- H. Tip Style (overall length)
(All tips are nylon design)
- I. Machine Make and Model

© 2009 MOLDERS CHOICE, Inc.



24 Hour Service - 7 Days a week

1-800-809-4623

WebSite: www.molderschoice.com • Email: modlers@molderschoice.com